

**(Mouse) Dlk1 Antibody (C-term)**  
**Purified Rabbit Polyclonal Antibody (Pab)**  
**Catalog # AP20860c**

**Specification**

---

**(Mouse) Dlk1 Antibody (C-term) - Product Information**

|                   |                        |
|-------------------|------------------------|
| Application       | FC, WB,E               |
| Primary Accession | <a href="#">Q09163</a> |
| Reactivity        | Mouse, Rat             |
| Host              | Rabbit                 |
| Clonality         | Polyclonal             |
| Isotype           | Rabbit IgG             |
| Calculated MW     | 41320                  |

**(Mouse) Dlk1 Antibody (C-term) - Additional Information**

**Gene ID** 13386

**Other Names**

Protein delta homolog 1, DLK-1, Adipocyte differentiation inhibitor protein, Preadipocyte factor 1, Pref-1, Fetal antigen 1, FA1, Dlk1, Dlk, Pref1, Scp-1

**Target/Specificity**

This (Mouse) Dlk1 antibody is generated from a rabbit immunized with a KLH conjugated synthetic peptide between 372-405 amino acids from the C-terminal region of human (Mouse) Dlk1.

**Dilution**

FC~~1:25

WB~~1:500-1:1000

E~~Use at an assay dependent concentration.

**Format**

Purified polyclonal antibody supplied in PBS with 0.09% (W/V) sodium azide. This antibody is purified through a protein A column, followed by peptide affinity purification.

**Storage**

Maintain refrigerated at 2-8°C for up to 2 weeks. For long term storage store at -20°C in small aliquots to prevent freeze-thaw cycles.

**Precautions**

(Mouse) Dlk1 Antibody (C-term) is for research use only and not for use in diagnostic or therapeutic procedures.

**(Mouse) Dlk1 Antibody (C-term) - Protein Information**

**Name** Dlk1

**Synonyms** Dlk, Pref1, Scp-1

**Function** May have a role in neuroendocrine differentiation. Inhibits adipocyte differentiation.

**Cellular Location**

Membrane; Single-pass type I membrane protein. Cytoplasm {ECO:0000250|UniProtKB:O70534}

**Tissue Location**

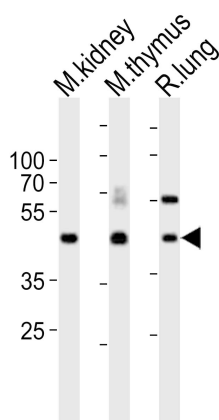
Highly expressed in fetal liver, placenta, adult adrenal gland, brain, testis and ovary and, to a lesser degree, in adult kidney, muscle, thymus and heart.

**(Mouse) Dlk1 Antibody (C-term) - Protocols**

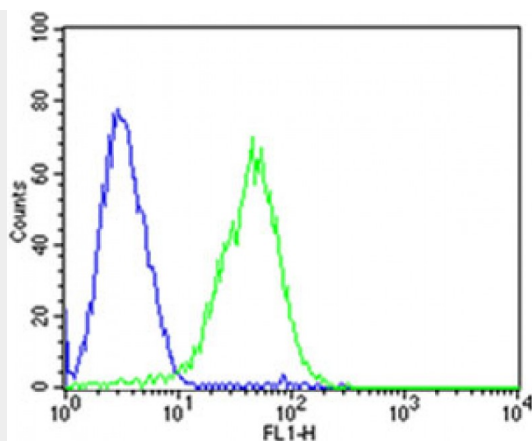
Provided below are standard protocols that you may find useful for product applications.

- [Western Blot](#)
- [Blocking Peptides](#)
- [Dot Blot](#)
- [Immunohistochemistry](#)
- [Immunofluorescence](#)
- [Immunoprecipitation](#)
- [Flow Cytometry](#)
- [Cell Culture](#)

**(Mouse) Dlk1 Antibody (C-term) - Images**



Western blot analysis of lysates from mouse kidney, mouse thymus, rat lung tissue lysate (from left to right), using Dlk1 Antibody (C-term)(Cat. #AP20860c). AP20860c was diluted at 1:1000 at each lane. A goat anti-rabbit IgG H&L(HRP) at 1:10000 dilution was used as the secondary antibody. Lysates at 20ug per lane.



Flow cytometric analysis of HepG2 cells using (Mouse) Dlk1 Antibody (C-term)(green, Cat#AP20860c) compared to an isotype control of mouse IgG2b(blue). AP20860c was diluted at 1:25 dilution. An Alexa Fluor® 488 goat anti-mouse IgG at 1:400 dilution was used as the secondary antibody.

#### **(Mouse) Dlk1 Antibody (C-term) - Background**

May have a role in neuroendocrine differentiation. Inhibits adipocyte differentiation.

#### **(Mouse) Dlk1 Antibody (C-term) - References**

Laborda J.,et al.J. Biol. Chem. 268:3817-3820(1993).  
Smas C.M.,et al.Cell 73:725-734(1993).  
Lee Y.L.,et al.Biochim. Biophys. Acta 1261:223-232(1995).  
Maruyama K.,et al.Submitted (AUG-1993) to the EMBL/GenBank/DDBJ databases.  
Smas C.M.,et al.Biochemistry 33:9257-9265(1994).

#### **(Mouse) Dlk1 Antibody (C-term) - Citations**

- [Administration of CoCl Improves Functional Recovery in a Rat Model of Sciatic Nerve Transection Injury.](#)